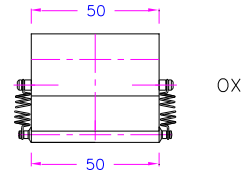
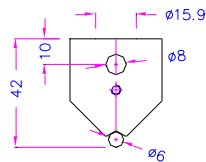
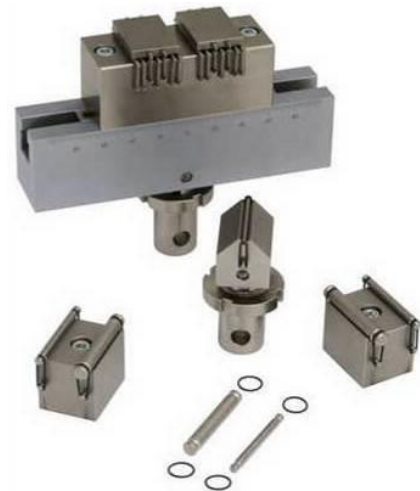


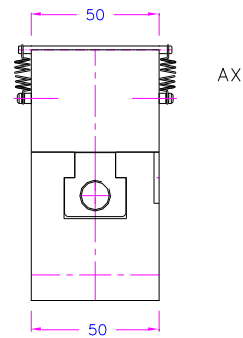
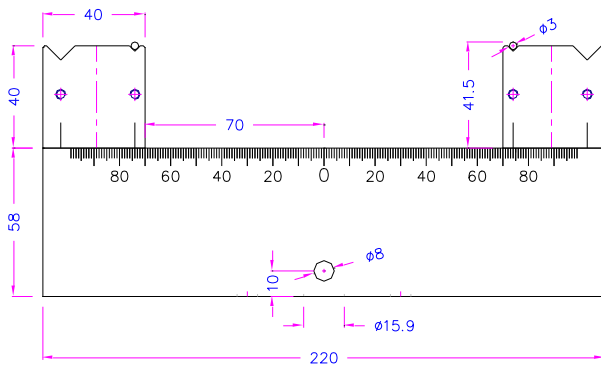
SHORT-BEAM STRENGTH TEST FIXTURE

Used to test polymer matrix composite materials and their laminates according to ASTM D2344 Fig.5 and Fig.6

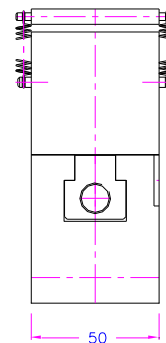
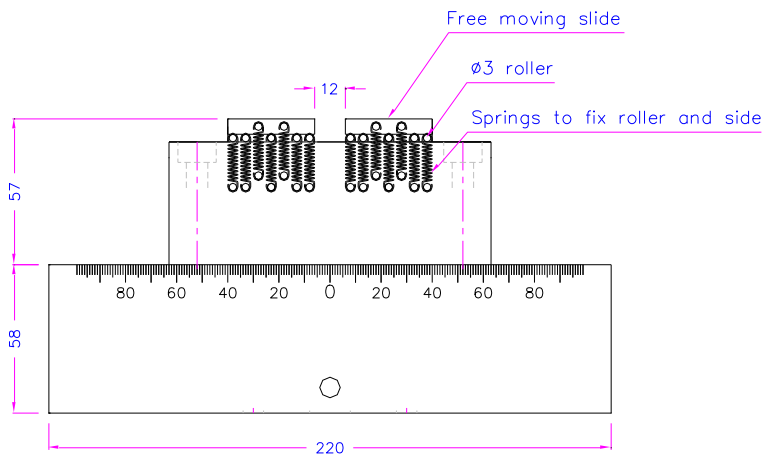
Item no.:	FF-T-ASTM-D2344
Max. load:	50 kN
Rollers:	6 mm Ø (top) and 3 mm Ø (bottom)
Material:	Steel, nickel-plated
Temperature range:	0 ... +70°C Further temperature ranges available on request
Weight:	8 kg
Scope of supply:*	1 bending bar, 1 top and 2 bottom anvils incl. rollers for flat laminate and 1 bottom support with free-moving slides for curved beam



OX

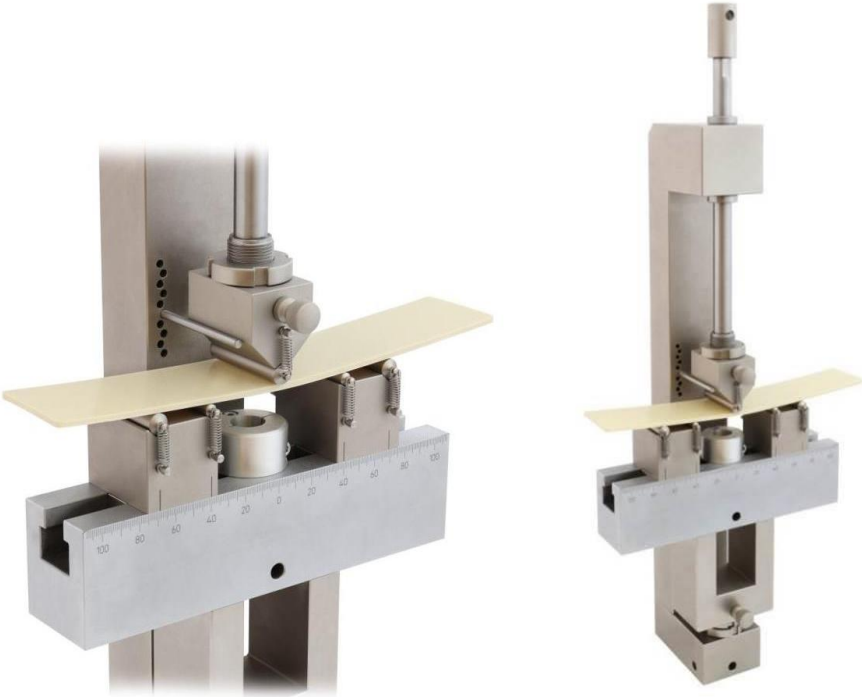


AX

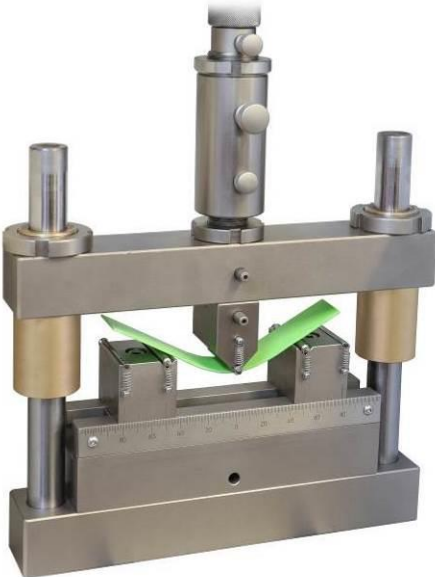


Bend fixtures also available for DIN EN ISO14130, ASTM-D790, ASTM-D7264, DIN EN2563, DIN EN ISO178, and more.

Examples of other versions:



FF-T-ASTM D2344



FF-T-ASTM-D2344+GDE