



## CPC

### CPC-AI Aluminum Circular Compression Platens

- Aluminum anodized compression platens applicable for foam, soft samples, cardboards, plastics, etc.
- Standard temperature range: -70°C - +180°C
- Platens with other dimensions and surfaces available upon request
- Scope of delivery: 1 pair

Model number	Diameter	Coupling	Weight	Capacity*
CPC-20T-56D	56 mm (2.2")	15.9mm	~0.1kg	20kN
CPC-20T-96D	96 mm (3.8")	15.9mm	~0.3kg	20kN
CPC-20T-116D	116 mm (4.6")	15.9mm	~0.4kg	20kN
CPC-20T-156D	156 mm (6.1")	15.9mm	~0.6kg	20kN
CPC-20T-196D	196 mm (7.7")	15.9mm	~1.2kg	20kN
CPC-20T-246D	246 mm (9.7")	15.9mm	~1.5kg	20kN
CPC-20T-296D	296 mm(11.5")	15.9mm	~3.3kg	20kN

\*Max capacity depends on the size of coupling



### CPC-St Steel Circular Compression Platens

- Applicable for hard materials, steel, hard plastics, concrete, etc.
- Hardened steel 58 HRC, manganese phosphated
- Standard temperature range: 0°C - +350°C
- Nickel plated option available upon request: -70°C - +350°C range
- Platens with other dimensions and surfaces available upon request
- Scope of delivery: 1 pair

Model number	Diameter	Coupling	Weight	Capacity*
Item number	Diameter			
CPC-50T-56D	56 mm (2.2")	31.8mm	~0.3kg	50kN
CPC-50T-96D	96 mm (3.8")	31.8mm	~1.1kg	50kN
CPC-50T-116D	116 mm (4.6")	31.8mm	~1.6kg	50kN
CPC-50T-156D	156 mm (6.1")	31.8mm	~4.0kg	50kN
CPC-50T-196D	196 mm (7.7")	31.8mm	~4.3kg	50kN
CPC-50T-246D	246 mm (9.7")	31.8mm	~9.0kg	50kN
CPC-50T-344D	344 mm(13.5")	31.8mm	~10 kg	50kN

\* Max capacity depends on the size of coupling



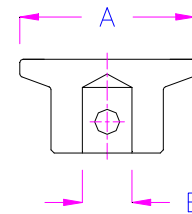
#### Drawing for Circular Compression Platens:

**A** Diameter of Platen [mm] 56, 96, 116, 156,196...etc

**B\*** Coupling Options: Female Eye End [mm] 15.9, 19.1, 20, 30, 31.8, 32, 36, 40  
Male Eye End Adapter [mm] Am15.8, Am20, Am31.7  
Other sizes and threaded adapters also available.

**C** Material: AL = Aluminum St = Steel

\* Max capacity depends on the size of coupling



**CPC Platens are rigid circular platens. CPS Platens are rigid square platens.**  
**For self-adjusting, spherically seated platens see CPC-SST.**

Examples for other versions and custom solutions



CPC-116-159-AL with 15.8 M. eye end adapter



CPC-156-38-Ni: Nickel plated steel platen  
Temperature range -70°C - +350°C



CPC-156-Am20-St



CPC-196-30-St-M8  
Steel platen with M8 thread



CPC-20-Am12-St



CPC-56-Af159-V2A