

**Customizable Puncture Fixtures**

FS-PT-A-B-C

**A**= Hole diameter

**B**= Probe Diameter

**Pr** half round probe with radius  $r$ 
**Nd** needle-like indenter diameter x angle

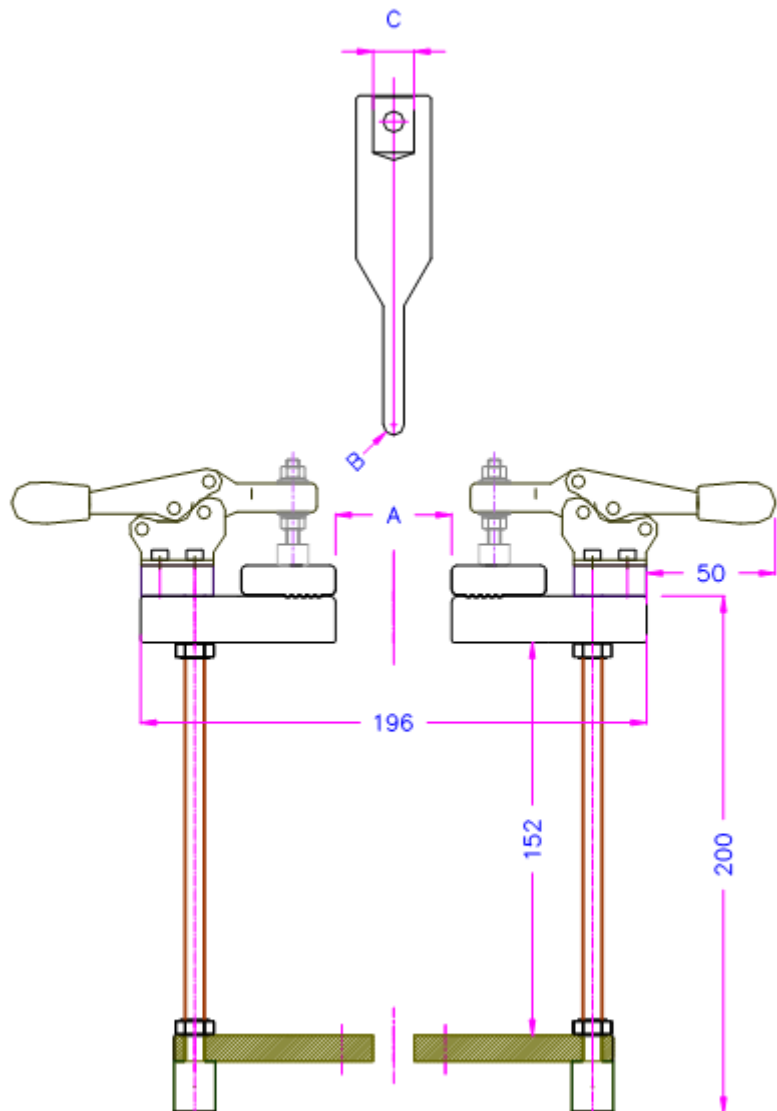
**C**=Adapter

Further options:

**1sc**: 1 side cut for single column machine

**2sc**: 2 sides cut to mount on single column machines

**Q** square platen

**GD** guided platen


**Puncture Fixture Examples**

Hardened  
4 clamps to hold specimen



FS-PT-25



FS-PT-66-R50



FS-PT-125-Pr5xV10-Af159-q



FS-PT-125-Pr5-Af159



FS-PT-24-P6-Af159-2sc

2 levers to hold samples  
2 sides milled to be used in  
single column machine



FS-PT-11.6-P9.53-2sc

2 sides cut to be used in  
single column machines



FS-PT-20-Nd1x30-Af159-  
2sc-EN863

Designed according to  
EN863

2 sides cut to be used in  
single column machines



FS-PT-89-P16Te+GD ASTM-  
D5748

Designed according to ASTM  
D5748

Teflon Pin

With guides



FS-PT-150-P50-ASTM-  
D6241

Designed according to ASTM  
D6241



**Probe Examples:**

PT-R2.5-38-Af159

Pin Radius 2mm



PT-R5-38-Af159

Pin Radius 5mm



PT-ED10-60-Af159



PT-100-0-Af159-Alu  
Pin Diameter 100mm  
Aluminum



FS-PT-P19Te  
Teflon Probe with 19mm  
diameter

