

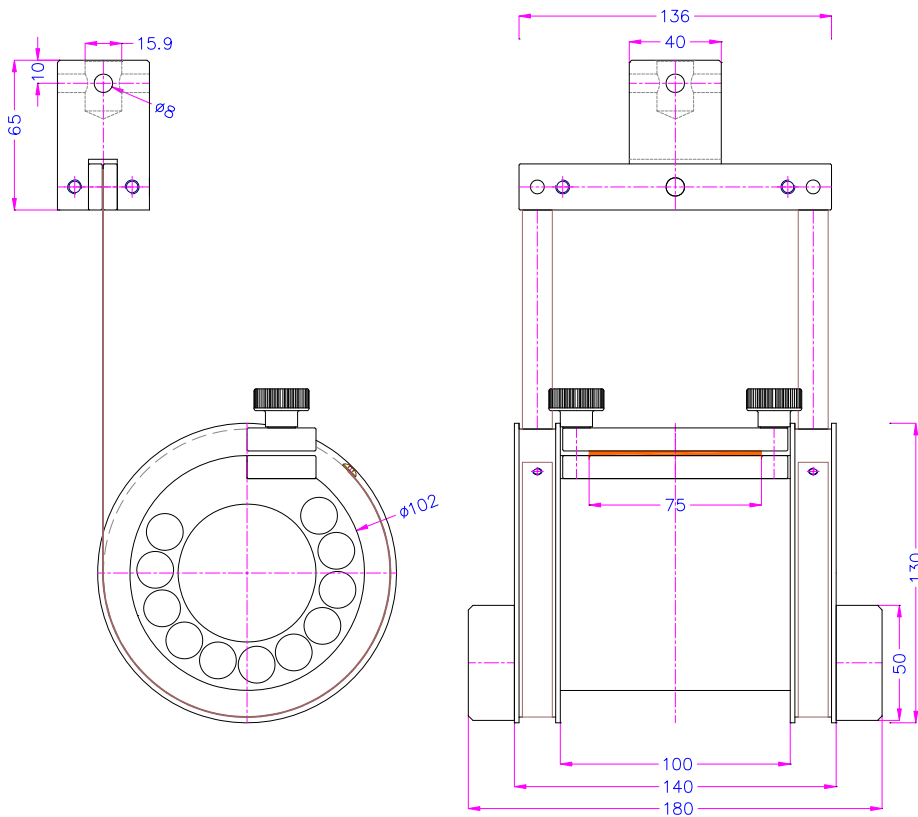
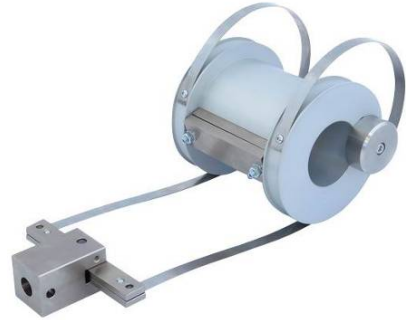
CLIMBING DRUM PEEL TEST FIXTURE

Climbing drum peel test fixture to determine the peel resistance of adhesive bonds between a relatively flexible adherent and a rigid adherent; and the relatively flexible facing of a sandwich structure and its core per ASTM D1781

EN 2243-3 and DIN 53295 designs also available (see Page 2)

The fixture consists of a flanged drum, flexible loading straps connected to the adapter, and clamps for holding the test specimen against the face of the drum.

Max. load:	5 kN
Standard adapter:	15.9mm (5/8in) female eye ends Adapters available on request
Material:	Aluminium (drum), steel (assembly)
Temperature range:	0 ... +70°C Further temperature ranges available on request
Drum diameter:	102mm
Specimen width:	25 mm (1 in.) for laminated assemblies 76 mm (3 in.) for sandwich constructions
Specimen length:	Min. 254 mm (10 in.) for laminated assemblies Min. 305 mm (12 in.) for sandwich constructions
Weight:	3.5 kg
Scope of delivery:	1 fixture. Upper grip is not included.



FS-CDT-ASTM D1781

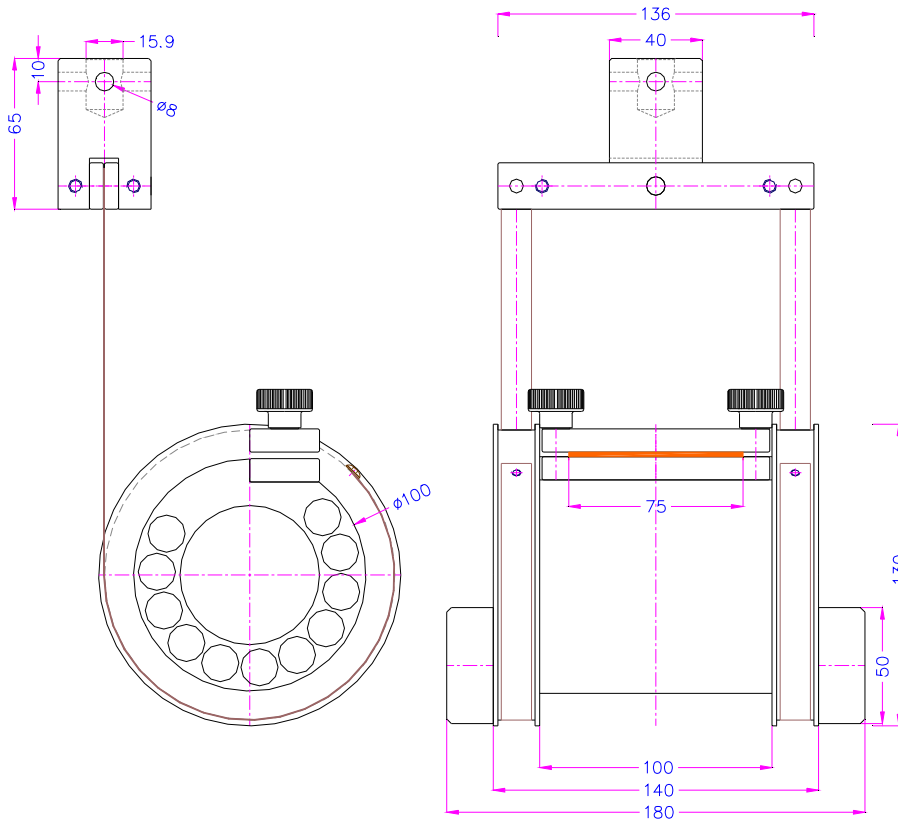
Item no.: **EN2243-3-100**
DIN53295-100

Climbing drum peel test fixture to determine the peel resistance of adhesive bonds in honeycomb core sandwich constructions according to EN 2243-3 and DIN 53295.

Drum diameter: 100 mm

Sample width: 75 mm

Sample length: 300 mm



FS-CDT-EN2243-3/DIN53295

Optional accessories:



Adjustable table – For setting the test up and starting the test